

POS	COMPONENTS	MATERIAL
1	Body	1.4408
2	Body end	1.4408/1.4404
3	Ball	1.4408/1.4404
4	Stem	1.4404
5	Gland follower	PEEK
6	Nut	A2-70
8	Stem seal	RPTFE
9	Seat	RPTFE
10	Body seal	RPTFE
11	Packing	RPTFE
13	Screw	A2-70
18	Handle	1.0460+ZINC
19	Handle screw	8.8+ZINC
20	Stopper screw	A2-70
28	Inner packing	GRAPHITE
29	Inner stem seal	GRAPHITE
37	Stem spring	1.4404
38	Stem ball	1.4404
47	Stopper	1.4301

DIMENSIONS

DN	PN	R27	R1	D	d1xf	b	L1	H1	H2	L2	d2	SW	H3	H4	H5	ISO	
15	16/40	115	130	95	45x2	16	52.5	39.5	95	160	14	11	22.5	11	2	F05	
20		120	150	105	58x2	18	56	42	101		18	14	26.5	14			
25		125	160	115	68x2		58	49.5	115								
32		130	180	140	78x2		62	55	125								
40		140	200	150	88x3		64.5	76	135		282	22	17	32.5	17	3	F07
50		150	230	165	102x3	20	67	83.5	145								
65	16	170	290	185	122x3	18	78	96	157								
65	40					22											
80	16	180	310	200	138x3	20	81.5	102.5	197	450	26	19	37.5	19		F10	
80	40					24											
100	16	190	350	220	158x3	20	87	120.5	212								
100	40				235 162x3	24											
150	16	350	480	285	212x3	22	148	160	263	700	33	24	42.5	24	3	F12	
150	40				300 218x3	28											

- Other materials and special alloys upon request.
- Seat ring materials depending on fluid and differential pressure.

Main features

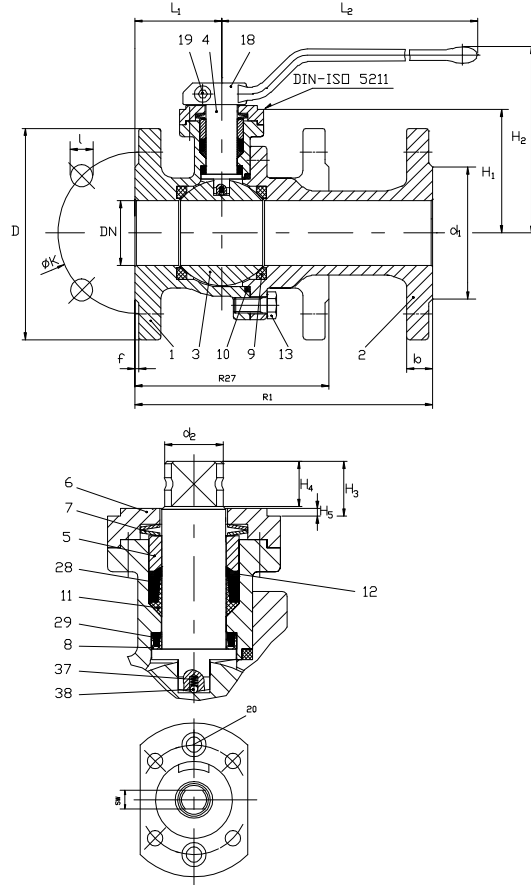
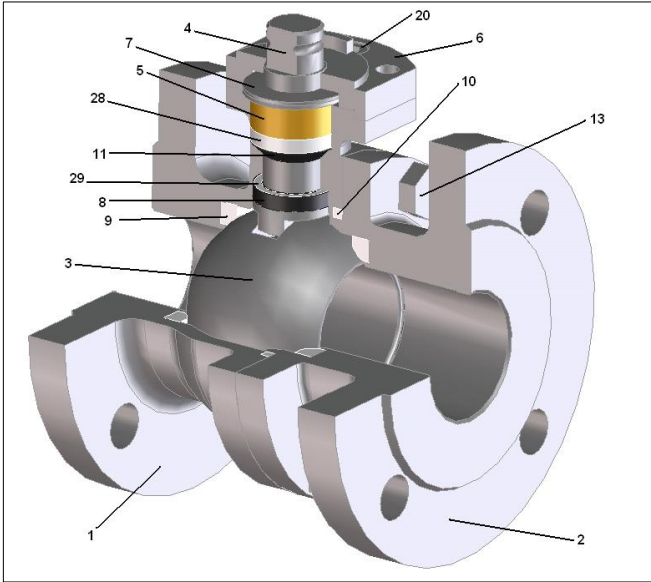
- BIDIRECTIONAL.
- SPLIT BODY.
- FULL BORE.
- FLOATING BALL.
- SOFT SEAT.
- ANTI BLOW OUT STEM.
- ANTI STATIC DEVICE.

Standards

- TOP FLANGE ISO 5211
- FACE TO FACE EN 558-1
- FLANGES EN 1092-1
- FACE TO FACE ANSI B16.10
- FLANGES ANSI B16.5

Official approvals

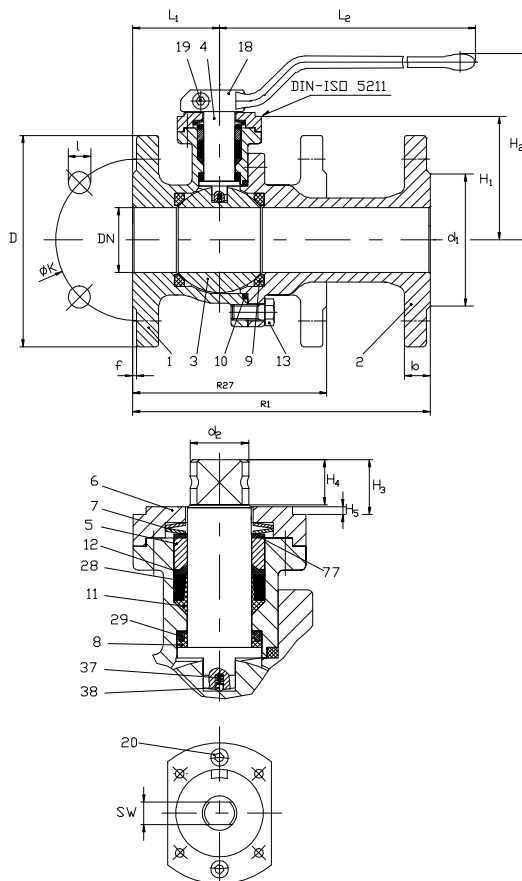
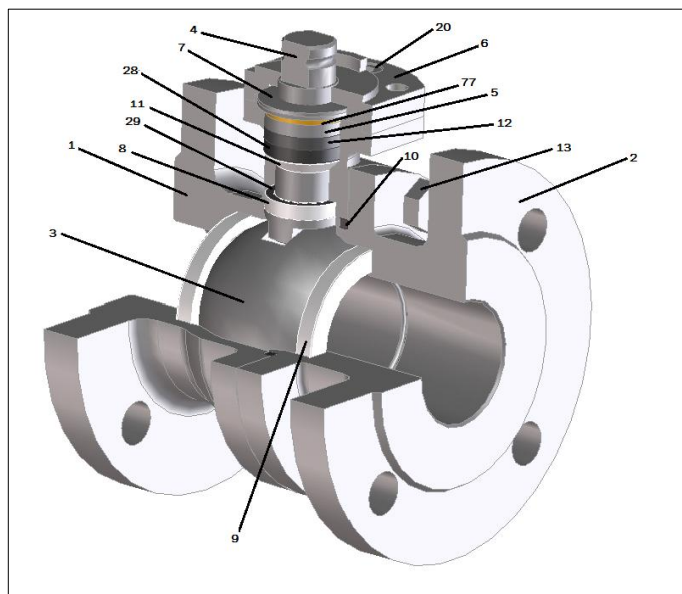
- ISO 9001:2008
- ISO 15848-1
- API 6D
- PED 2014/68/EU
- AD 2000 Merkblatt W0
- TA-LUFT/VDI 2440
- ATEX 94/9/EC
- IEC EN 61508:2010 (SIL 3)



POS	COMPONENTS	MATERIAL
1	Body	1.4408
2	Body end	1.4408/1.4404
3	Ball	1.4408/1.4404
4	Stem	1.4404
5	Gland follower	PEEK
6	Cover	1.4301
7	Spring plate	1.4568
8	Stem seal	RPTFE
9	Seat	RPTFE
10	Body seal	RPTFE
11	Packing	RPTFE
13	Screw	A2-70
18	Handle	1.0460+ZINC
19	Handle screw	8.8+ZINC
20	Cover screw	A2-70
28	Inner packing	GRAPHITE
29	Inner stem seal	GRAPHITE
37	Stem spring	1.4404
38	Stem ball	1.4404

DIMENSIONS

DN	PN	R27	R1	D	d1xf	b	L1	H1	H2	L2	d2	SW	H3	H4	H5	ISO
15	16/40	115	130	95	45x2	16	52.5	39.5	95	160	14	11	14	11	2	F05
20		120	150	105	58x2	18	56	42	101	180	18	14	17	14		
25		125	160	115	68x2		58	49.5	115							
32		130	180	140	78x2		62	55	125							
40		140	200	150	88x3		64.5	76	135	282	22	17	21.5	17	3	
50	150	230	165	102x3	20	67	83.5	145	450	26	19	23.5	19			
65	16	170	290	185	122x3	18	78	96						157		
65	40					22										
80	16	180	310	200	138x3	20	81.5	102.5	197	700	33	24	28	24	3	F12
80	40					24										
100	16	190	350	220	158x3	20	87	120.5	212							
100	40				235 162x3	24										
150	16	350	480	285	212x3	22	148	160	263							
150	40				300 218x3	28										



POS	COMPONENTS	MATERIAL
1	Body	1.4408
2	Body end	1.4408/1.4404
3	Ball	1.4408/1.4404
4	Stem	1.4404
5	Gland follower	1.4404
6	Cover	1.4301
7	Spring plate	1.4568
8	Stem seal	RPTFE
9	Seat	RPTFE
10	Body seal	GRAPHITE
11	Packing	RPTFE
12	Fire safe seal	GRAPHITE
13	Screw	A2-70
18	Handle	1.0460+ZINC
19	Handle screw	8.8+ZINC
20	Cover screw	A2-70
28	Inner packing	GRAPHITE
29	Inner stem seal	GRAPHITE
37	Stem spring	1.4404
38	Stem ball	1.4404
77	Fire safe plate	PEEK

DIMENSIONS

DN	PN	R27	R1	D	d1xf	b	L1	H1	H2	L2	d2	SW	H3	H4	H5	ISO								
15	16/40	115	130	95	45x2	16	52.5	39.5	95	160	14	11	14	11	2	F05								
20		120	150	105	58x2	18	56	42	101	180	18	14	17	14										
25		125	160	115	68x2		58	49.5	115															
32		130	180	140	78x2		62	55	125	282	22	17	21.5	17	3	F07								
40		140	200	150	88x3		64.5	76	135															
50		150	230	165	102x3	20	67	83.5	145															
65		16	170	290	185	122x3	18	78	96	157	450	26	19	23.5	19		F10							
65			40					22																
80		16	180	310	200	138x3	20	81.5	102.5	197								24						
80		40					24																	
100	16	190	350	220	158x3	20	87	120.5	212	700								33	24	28	24	3	F12	
100	40			235	162x3	24																		
150	16	350	480	285	212x3	22	148	160	263															33
150	40			300	218x3	28																		

- Other materials and special alloys upon request.
- Seat ring materials depending on fluid and differential pressure.

Main features

- BIDIRECTIONAL.
- SPLIT BODY.
- FULL BORE.
- FLOATING BALL.
- SOFT SEAT.
- ANTI BLOW OUT STEM.
- ANTI STATIC DEVICE.

Standards

- TOP FLANGE ISO 5211
- FACE TO FACE EN 558-1
- FLANGES EN 1092-1
- FACE TO FACE ANSI B16.10
- FLANGES ANSI B16.5

Official approvals

- ISO 9001:2008
- ISO 15848-1
- API 6D
- PED 2014/68/EU
- AD 2000 Merkblatt W0
- FIRE SAFE CERTIFICATE
- TA-LUFT/VDI 2440
- ATEX 94/9/EC
- IEC EN 61508:2010 (SIL 3)